

FOR LEASE

6805 Newbrook Ave

East Syracuse, New York 13057

FLEX BUILDING FOR LEASE



6,570± SF Quality Built Flex Building

Property Highlights

- Masonry, free-standing building
- 1,370± SF office space with conference room, reception area, and air conditioning
- 5,200± SF warehouse with 1 dock door (12'x10') and 1 drive-in door (8'x8')
- Small storage mezzanine over office
- Clear span, 12'8" clear ceiling height
- Multiple radiant heaters
- 220V 3Phase electric
- Situated on a dead-end street off East Molloy Road
- Close to airport and all major highways

Owned &
Managed By:

For more information, please contact:

William P. Evertz
Real Estate Salesperson
+1 315.445.8528
wevertz@pyramidbrokerage.com

5845 Widewaters Pkwy, Suite 200
East Syracuse, New York 13057
phone: +1 315.445.1030
pyramidbrokerage.com

FOR LEASE

6805 Newbrook Ave

East Syracuse, New York 13057



Main Office



Private Office



Warehouse



Conference/Break Room

Owned & Managed By:



FOR LEASE

6805 Newbrook Ave

East Syracuse, New York 13057



12'x10' Drive-In Door



8'x8' Dock Door



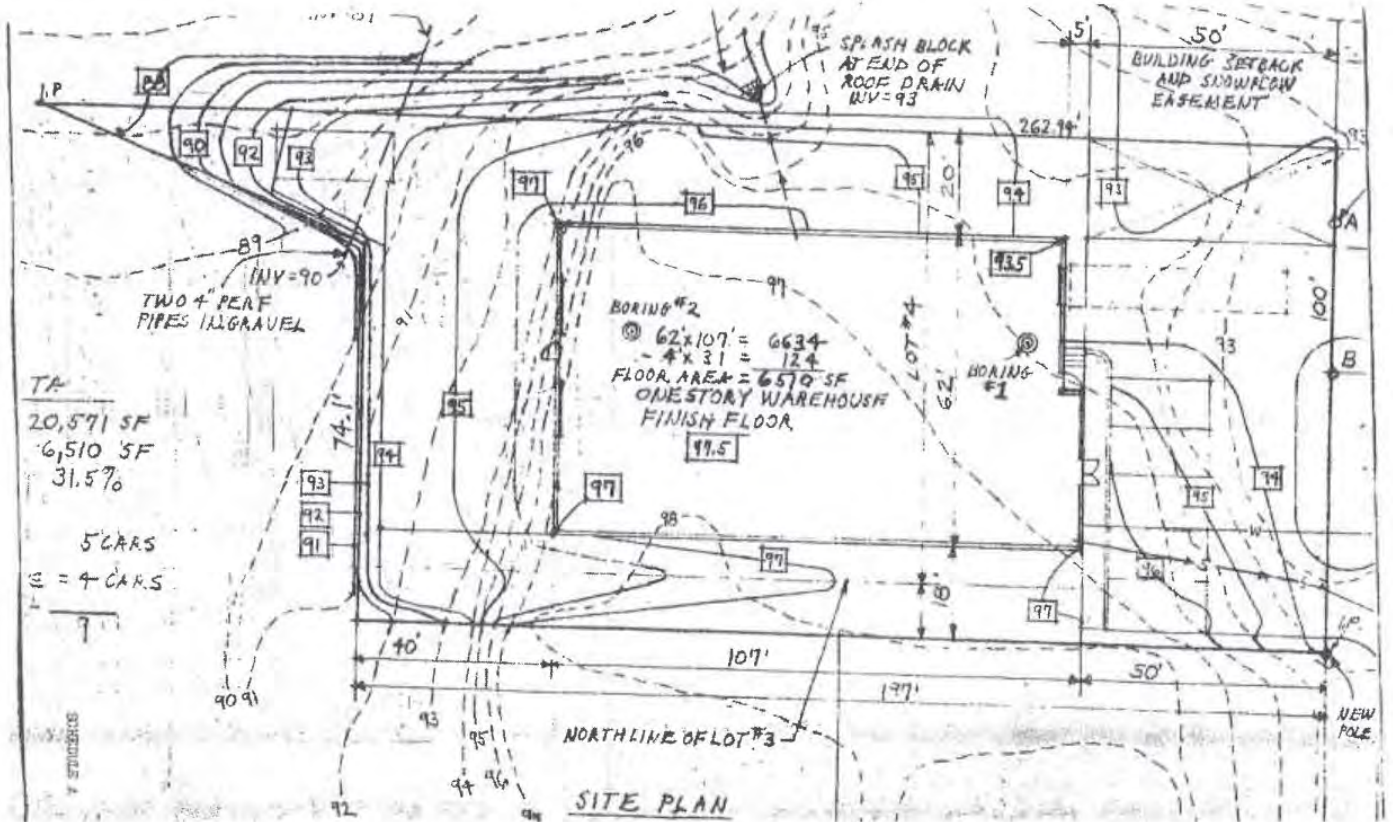
Warehouse/Entrance to Mezzanine



Rear of Building

Owned & Managed By:





Site Plan

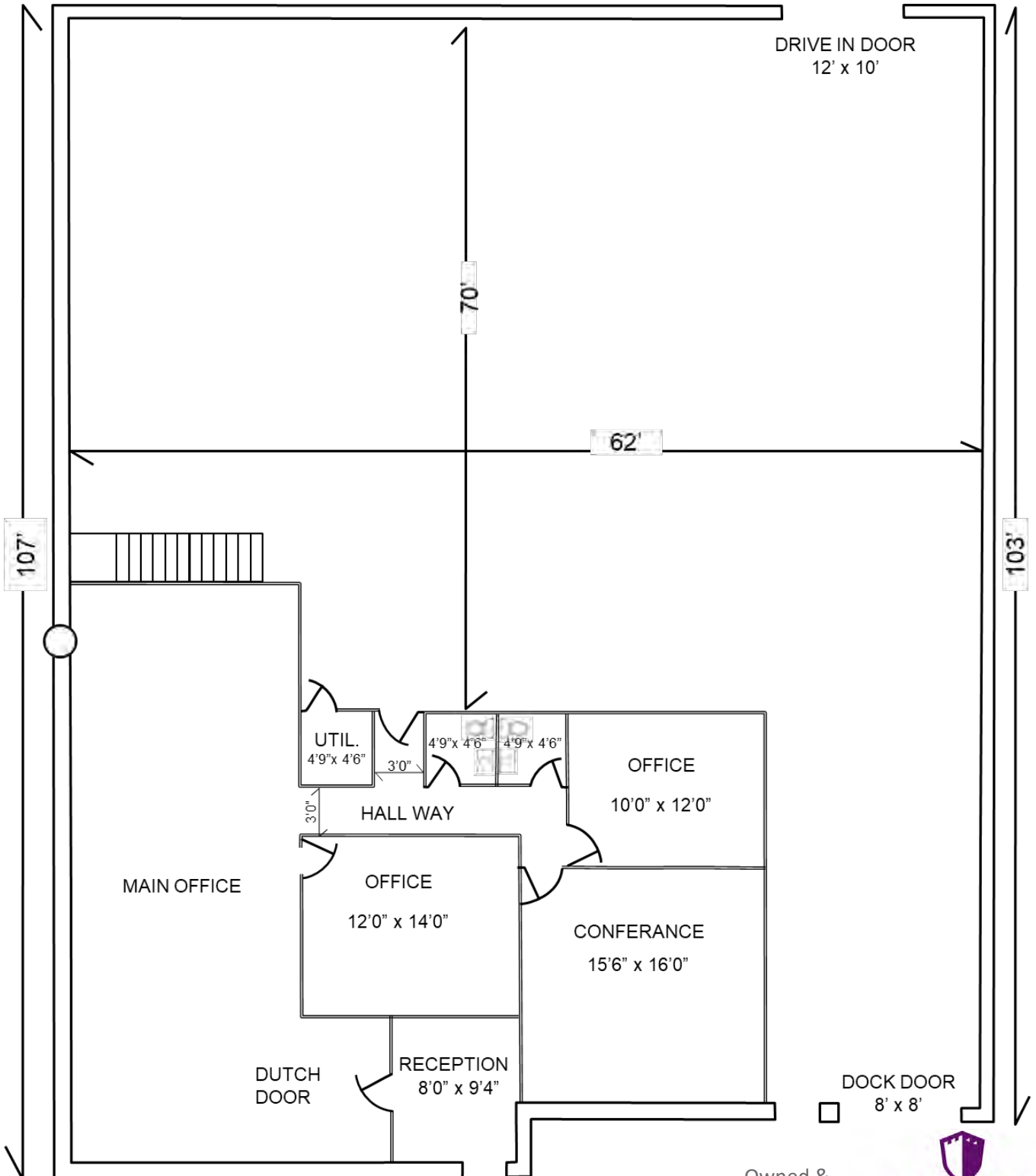
Owned & Managed By:



FOR LEASE

6805 Newbrook Ave

East Syracuse, New York 13057



Floor Plan

Owned & Managed By:

